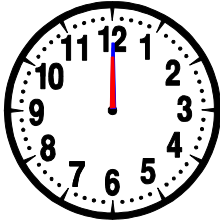




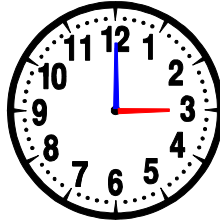
# Lire l'heure... (05)

- Le déroulement chronologique d'une journée.
- Complète :



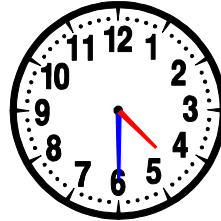
0 : 00

il est minuit



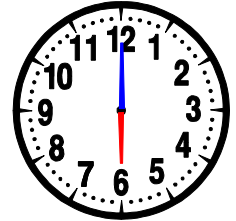
..... : .....

il est 3 heures du matin



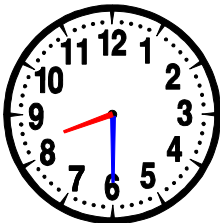
4 : 30

il est 4 heures et demie du matin



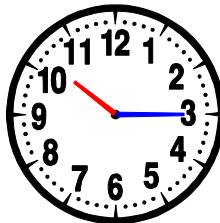
6 : 00

.....  
.....



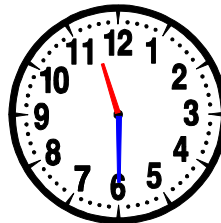
..... : .....

il est 8 heures et demie



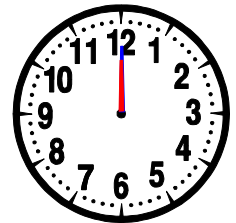
10 : 15

.....  
.....



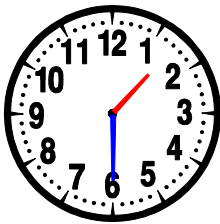
11 : 30

il est 11 heures et demie



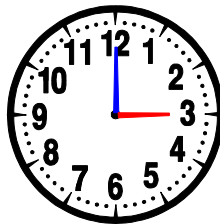
..... : .....

.....  
.....



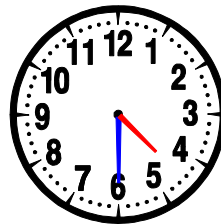
..... : .....

il est 1 heure et demie



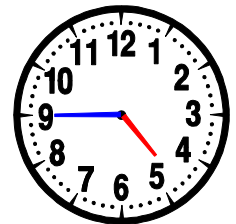
15 : 00

il est 3 heures de l'après-midi



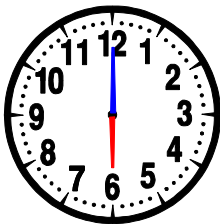
16 : 30

.....  
.....



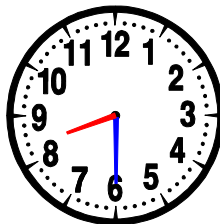
..... : .....

il est 5 heures moins le quart



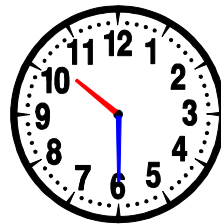
..... : .....

il est 6 heures du soir



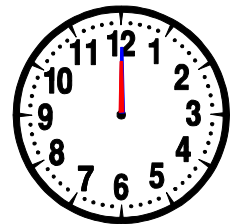
20 : 30

.....  
.....



..... : .....

il est 10 heures et demie



00 : 00

.....  
.....